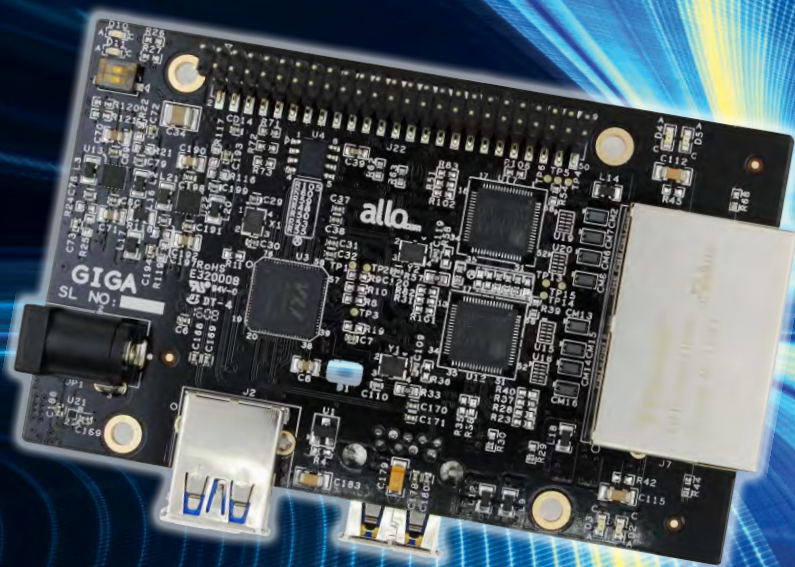




GIGA SHIELD

NETWORKING USB / ETHERNET HUB

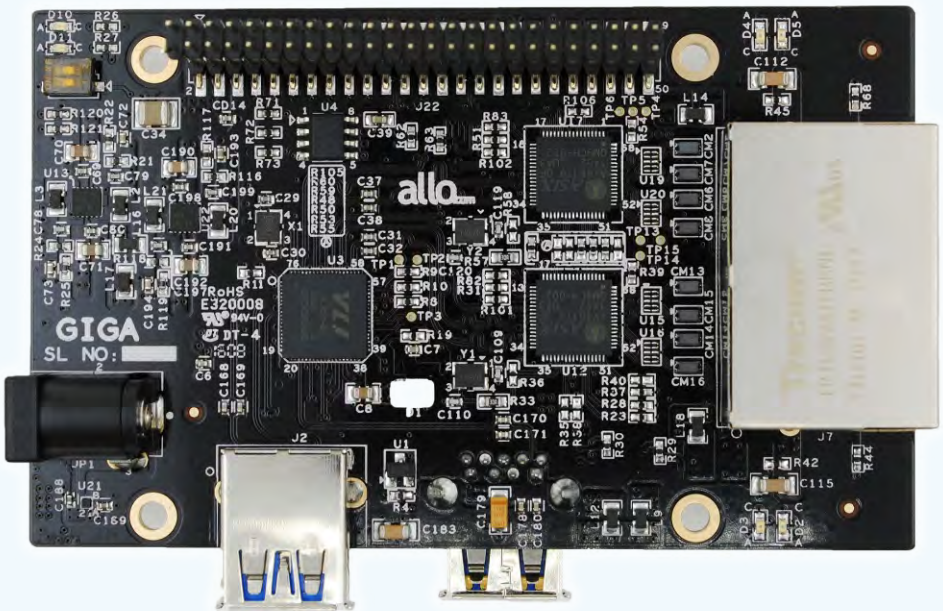


FOR MORE INFORMATION PLEASE CONTACT
GLOBALSALES@ALLO.COM

allo.com

Add 2 X Gigabit Ethernet Ports to your SPARKY with this *Shield*. Installs in a snap and increases the versatility of your SPARKY

Top View



FOR MORE INFORMATION PLEASE CONTACT
GLOBALSALES@ALLO.COM

allo.com

These 2 x Gb Ethernet ports connect to **SPARKY** by USB 3.0. We have reached packet transfer speeds of 200Mbps with both ports working and up to 600Mbps on a single port (speeds are for packet transfer only without additional security/services added). These transfer rates are more than acceptable for a house/SOHO and even SMB set up.

Sparky + GIGA Shield can be used to run many different open source applications such as:

- SHIELD (Unified Threat Manager)
- Ntop-NG (Traffic Monitoring/Network Analyzer)
- OpenWRT (Embedded router distribution)
- IPFire (Firewall)
- OpenMediaVault (NAS Solution)
- Squid/Nginx (Content filtering/Web load balancing Gateway)
- Network/Application vulnerability Scanners
- 4G Routers (With USB based Add-on modules)
- Strongswan/OpenSwan (IPSec VPN)
- OpenVPN (SSLVPN)
- OpenBTS (Software based GSM Access Points)

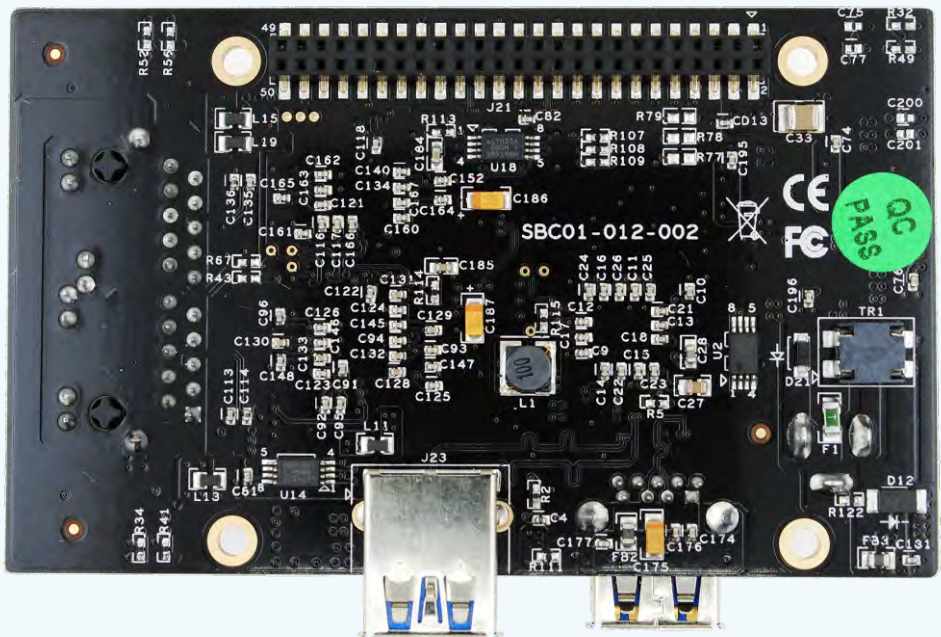
Key Features

Gigabit 10/100/1000 Mbps

Ports: 2

Input Voltage (from main board): 5V

Bottom View



FOR MORE INFORMATION PLEASE CONTACT
GLOBALSALES@ALLO.COM

allo.com