

PRI Gateway

Quick Installation Guide



Copy Right

Copyright © 2014 Allo. All rights reserved.

No part of this publication may be copied, distributed, transmitted, transcribed, stored in a retrieval system, or translated into any human or computer language without the prior written permission of Allo.com. This document has been prepared for use by professional and properly trained personnel, and the customer assumes full responsibility when using it.

Proprietary Rights

The information in this document is Confidential to Allo and is legally privileged. The information and this document are intended solely for the addressee. Use of this document by anyone else for any other purpose is unauthorized. If you are not the intended recipient, any disclosure, copying, or distribution of this information is prohibited and unlawful.

Disclaimer






Information in this document is subject to change without notice and should not be construed as a commitment on the part of **allo.com**. And does not assume any responsibility or make any warranty against errors. It may appear in this document and disclaims any implied warranty of merchantability or fitness for a particular purpose.

About this manual

This manual describes the Allo product application and explains how to work and use its major features. It serves as a means to describe the user interface and how to use it to accomplish common tasks. This manual also describes the underlying assumptions and users make the underlying data model.

Document Conventions

In this manual, certain words are represented in different fonts, typefaces, sizes, and weights. This highlighting is systematic; different words are represented in the same style to indicate their inclusion in a specific category. Additionally, this document has different strategies to draw User attention to certain pieces of information. In order of how critical the information is to your system, these items are marked as a note, tip, important, caution, or warning.

Icon	Purpose
	Note
	Tip/Best Practice
	Important
	Caution
	Warning

- **Bold** indicates the name of the menu items, options, dialog boxes, windows and functions.
- The color [blue](#) with underline is used to indicate cross-references and hyperlinks.
- Numbered Paragraphs - Numbered paragraphs are used to indicate tasks that need to be carried out. Text in paragraphs without numbering represents ordinary information.
- The Courier font indicates a command sequence, file type, URL, Folder/File name
- e.g. www.allo.com

Support Information

Every effort has been made to ensure the accuracy of the document. If you have comments, questions, or ideas regarding the document contact online support: <http://support.allo.com>

Table of Contents

About this manual	3
Document Conventions.....	3
Support Information.....	3
1. Hardware Setup	5
2. Accessing the WEB GUI	6
2.1 Notification LEDs (On the Front Panel of the Gateway)	7
3. Creating SIP Trunks	8
4. Creating PRI Trunks	8
5. Call Routing Rules	8

1. Hardware Setup

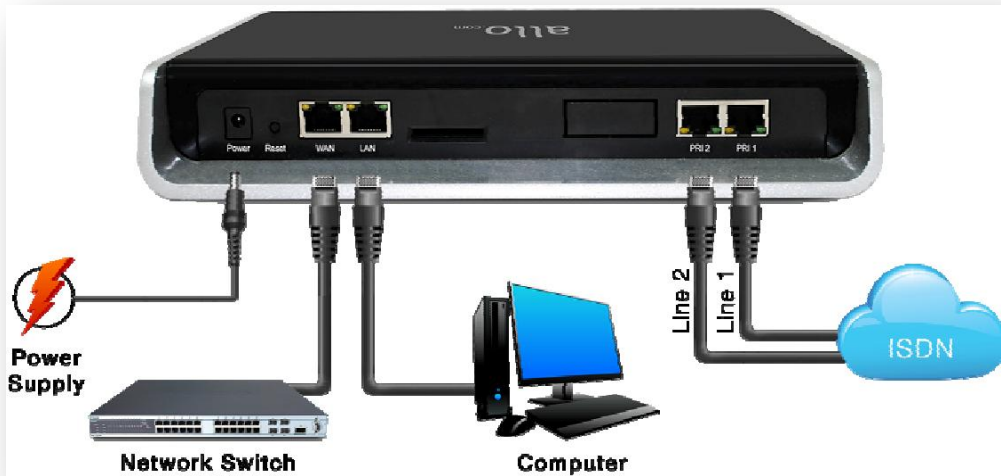


Figure 1: Hardware Setup

1. Unpack the items from the box
2. Plug one end of the RJ45 Ethernet cable to your PC & other end into the Management Port (LAN) of the PRI Gateway.
3. Plug one end of the RJ45 Ethernet cable into your Network Switch & other end into the WAN port of the PRI Gateway.



Use Straight-through Ethernet cable to connect between the unit & Router/Switch/PC

4. Plug one end of the RJ45 cable into the PRI 1 port of the PRI Gateway & other end to the E1/T1 service provider socket.



For the PRI cross over cable pin out please refer

<http://support.allo.com/GetAttachment.ashx?FileID=169>

5. Plug the power cable to the PRI Gateway; wait until the Gateway boot up completely.



Ready LED (LED 2) goes blue indicating that Gateway is boot up completely.

Configure your PRI Gateway according to the instructions below.

2. Accessing the WEB GUI

PRI Gateway WEB GUI can be accessed either through WAN or Management Interface (LAN)

- 1) Make the setup as described in Hardware setup section, Lets access the WebGUI through Management Interface (LAN)
- 2) Change the Network setting of the PC in manual mode (i.e. Static IP mode). Assign the IP address to the PC in the range of 192.168.113.xxx (E.g:192.168.113.10), net mask as 255.255.255.0 and gateway & DNS as 192.168.113.1.
- 3) Launch the web browser and enter the URL <http://192.168.113.2> which is the default IP address of the Management interface (LAN) of the PRI Gateway.



Figure 2: Login page

- 4) Login using the default username & password (Default: Username: admin; Password: admin). Successful login takes you to the Dashboard page. Observe the WAN IP address on the dashboard, this will be used to access the GUI from the WAN interface.
- 5) If your network is not enabled with DHCP server, configure the WAN port IP address manually in the **SETTINGS > Network Settings** section as per your requirement.

In 4.0.0 onwards, Media IP Address needs to be configured manually and it should be in the same network segment of WAN IP address. This IP address is used for Voice Media Configuration.

For E.g.: If the WAN IP address is 192.168.0.145 and media IP address should be in the same Network Segment (available IP address) side. 192.168.0.3



If the media IP address not configured, there won't be voice path in the calls.



Recommended Web Browser to access GUI is Mozilla Firefox.

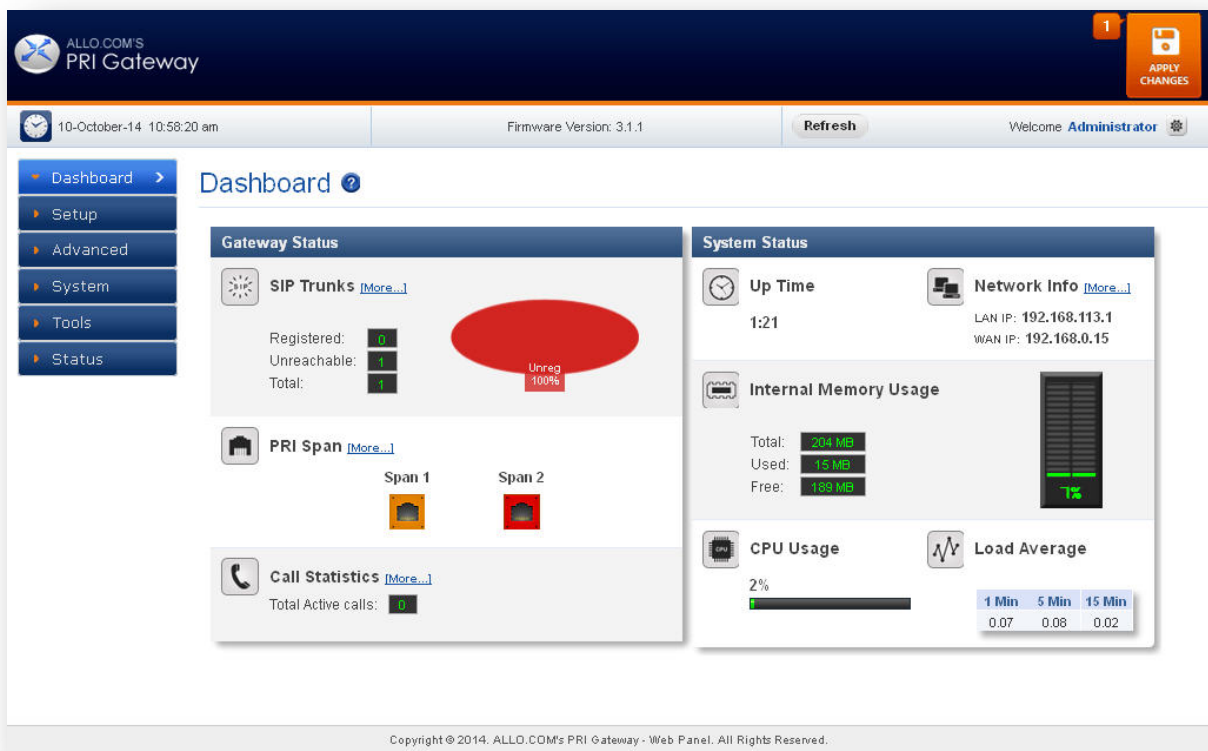


Figure 3: Dashboard

2.1 Notification LEDs (On the Front Panel of the Gateway)

LED 6	LED 7	LED 2	WAN	LAN	Power
Blue On- PRI 1 link is up (No Alarm)	Blue On- PRI 2 link is up (No Alarm)	Blue On- System Ready Blue Blink- Factory Reset	Orange Blinks- WAN link is up.	Orange Blinks- LAN link is up.	Orange On- Power is on.

3. Creating SIP Trunks

This will allow you to make calls using your VoIP Account.

- 1) Click **Add a SIP Trunk**
- 2) Create a SIP account with the preferred registration mode.
Registration Mode:
 - **None:** IP peer trunking
 - **From Gateway:** Gateway is registering to PBX or VoIP service provider.
 - **To Gateway:** Endpoint registering to Gateway.
- 3) Enter the PBX or VoIP service provider IP address for registration modes “ From Gateway or None”
- 4) Click authentication, if it is required
- 5) Click registration and add registrar address
- 6) Click on “Create” to save the settings.

4. Creating PRI Trunks

This will allow you to make calls using your PRI line.

- 1) Connect your ISDN PRI line to the PRI 1 port of the PRI Gateway
- 2) Click on the **SETUP > ISDN PRI Trunks** link in the GUI, then select **Create PRI Trunks**
- 3) Enter Name your Trunk (Office Line 1 for example), Outbound Caller ID and Click **CREATE**
- 4) You have a live PRI line plugged to your PRI Gateway.
- 5) Click on “Create” to save the settings.

5. Call Routing Rules

Depending on the number you dial, the PRI gateway will select the configured PRI/SIP Trunk.

- 1) Click **Add Call Routing Rule** to add an incoming or outgoing routing rule for ISDN and VoIP call.
- 2) Select “Incoming type” and required trunk name under “Incoming from”.
- 3) Enter the Dial Pattern to match the expected number. Following are the characters supported in the Dial Pattern.
X matches any digit from 0-9 Z matches any digit from 1-9

N matches any digit from 2-9

[1237-9] matches any digit or letter in the brackets (in this example, 1, 2, 3, 7, 8, and 9)

[a-z] matches any lower case letter

[A-Z] matches any UPPER case letter

. Wildcard, matches one or more characters

! Wildcard matches zero or more characters immediately.

- 4) **Trim Digits:** Allows the user to specify the number of digits that will be stripped from the dialed number. For Ex: If you configure the pattern as 9X. And you want to strip 9, and then the count of the digits stripped is 1, which must be placed in Trim Digits field.
- 5) **Prepend Digits:** Allows the user to specify the digits which are prepended before placing the call via trunk. For Ex: If dialed number is 8789763010 and if you want to prepend 44 as a country code then place 44 in prepend digits field.
- 6) **Add Outbound Call Route:** Select proper SIP trunk or PRI trunk or Time route Group, where the call as to be routed to.
- 7) Click on “Create” to save the settings.



Click on “**Save All**” to apply all the changes to the call Manager.

THE FULL VERSION MANUAL WILL PROVIDE YOU DETAILED INSTRUCTIONS ABOUT THE FULL FEATURE SET OF THE ALLO PRI GATEWAY.

THANK YOU!

Thank you for choosing



Adarsh Eco Place, #176, Ground Floor, EPIP Industrial Area, Kundalahalli
KR Puram Hobali, Whitefield, Bangalore - 560066.

Email: globalsales@allo.com
indiasales@allo.com

Phone: +91 80 67080808